



Merivale School

Te Kura o Tūtarawānanga



Matuatia Te Ako



Learning First

PĀNUI

18 March 2025



**Getting started on the school gardens...
students are excited to see things grow.**

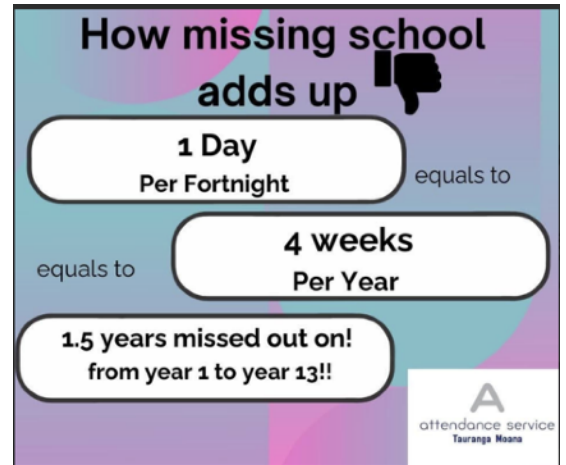
WEEK 7
WEEK 8

MON	TUE	WED	THU	FRI	SAT	SUN
17 March	18 March Throat & Skin Nurse	19 March	20 March	21 March Throat & Skin Nurse	22 March	23 March
24 March	25 March Throat & Skin Nurse	26 March	27 March	28 March Throat & Skin Nurse	29 March	30 March

Attendance.

On Monday morning Tohora had 34 tamariki out of a possible 39 tamariki or 87% come to kura to begin their week. Our overall attendance for week 6 was 88.25%.

Keep working hard to reach our target of 90% weekly attendance.



CARPARK DROP OFF AREA:

Can we please ask that cars are not left un-attended in the drop off zone, this creates congestion in the mornings.

If you need to leave your car for any reason then please park it either in one of the school car parks or on the street.



We have been making mandala to support our math topics of ordering, sorting and patterns.

Cooking challenge.

We have some budding chefs in our school.

Jock and Raniera took up the challenge of making pork and cabbage dumplings. They were supported by Heather (Raniera's grandma).

There was some serious concentration and their smiles show how happy they were. The challenge was a great success.

Matua Bryan said they were better than the shop bought ones.

Thank you Heather for supporting our tamariki.



Friday gardening day.

Our wilderness is being tamed ready for planting vegetables and keeping our fruit trees healthy.

Thank-you to KPMG for allowing your graduates to join us for the day last week. It was a huge day with mulching, pruning, weeding and fertilising our gardens ready for our tamariki to begin working in this space.

Every Friday Jess will be working in the garden area with tamariki.

If you would like to join us you are very welcome.



Walking Wednesday.

Last week I shared some statistics of the distance our tamariki need to walk to get to school. We have discovered that 84% of tamariki live within a 2 km radius of our kura, 75% live within a 1km radius and 58% live within 500m of our kura. Owing to so many tamariki living within walking distance to school our Ambassadors will be organising and encouraging as many of our tamariki to walk to school on a set day. Walking Wednesday is run in conjunction with the Tauranga City Council (T.C.C) Our ambassadors Kian, Kiara and Hoani met with Sean from T.C.C to learn about the Wednesday Walking programme. There will be more information about this next week.

Road Safety / Walking to School - this weeks tips:

If you are coming to collect your tamaiti and they are already in the walking group going down Kesteven Avenue please park your vehicle and go to the walking group to find your tamaiti.

Calling them to run across the road is very unsafe and could lead to them being hurt.

Please keep remembering to make those seat belts click.

We are still seeing unrestrained tamariki in cars.



Fun learning in Te Awaiti